



The Nova Scotia Post

The Newsletter of the Nova Scotia Stamp Club

May 2014
Volume 43, Issue 440

UP and COMING

May 3 Moncton Stamp Fair

May 13 Club Meeting
Auction; Jim Graham "What I Collect"

May 15 Friends of Philately

May 3 - 4 2014

Orapex

RA Stamp Club

RA Centre, Ottawa, ON

www.orapex.ca

May 30 - June 1 2014

Royal 2014 Royale, Halifax

Lord Nelson Hotel

Details on Page 4

www.royal2014royale.com

June 10 Club Meeting

Flea Market; Scavenger Hunt
Displays; Closing

June 19 Friends of Philately

September 24 / 28 SPM Expo

2014: International Exhibition

FIAF - St-Pierre-et-Miquelon

Travelling? Check out time and
place of other shows at

www.rpsc.org/shows.html or

www.csdaonline.com/shows

D.L.O. Canada

DE 17 / 06

MONTREAL BRANCH

Treasures are sometimes in the stories one is able to ascertain in various postal history items. They do not always contain all the answers but it is the pieces of the puzzle that get recognized while others pass them over.

Although I miss many things sometimes right under my nose, I was fortunate to have noticed this parcel piece with a customs label to England. A fondness for parcel post items, my amazement when I saw the Montreal D.L.O. cds in the Date Stamp section of form 91 B - 1000,000- 13-12-05.

Dead Letter Office handstamps are seldom seen on Parcel Post items, especially on Customs labels (my first).

One can only speculate on the whole story here, but what we do know is that 16 cents in Edwards stamps were placed on a Canadian parcel weighing 7 ounces. An assumption here is that no Customs label was attached, the parcel may have been opened, a customs label attached with a note 'Pr of sl.... g....' and #1481 marked on the label.

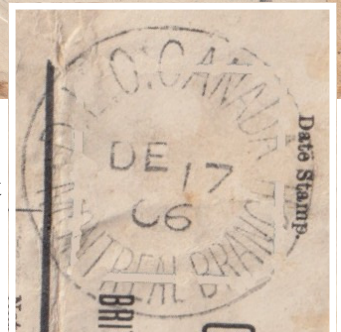
Forwarded to England, a British PO label specifically for Canada was attached, also marked No. '1481' and Inland Postage of d '3' due.

With no other information we can only assume the item was delivered after the Christmas season.

The DLO sometimes handled underpaid material, received payment and forwarded the items, however, they were required to cancel the stamps with a DLO handstamp that was not done in this case.

#17 Continuing Series by Gary Steele

DLO Parcel to England



New issue: Royal Ontario Museum

April 11, 2014 - Toronto, ON

Europa Stamps

by Jeff Parks

EUROPA stamps were first issued in 15 September 1956 to promote philately with Europe as a central theme, building awareness of the common roots, culture and history of Europe. The stamps are issued by the postal administrations of member countries of the European Communities (ECSC 1956-1959), the European Conference of Postal and Telecommunications Administrations (CEPT 1960-1992), then the PostEurop Association since 1993.

The idea of a joint stamp issue or common design began in 1952 but it wasn't until some years later, after the signing of the Treaty of Rome, that the founding six members (Belgium, France, Germany, Italy, Luxembourg and Netherlands) of the European Coal and Steel Community (ECSC) issued stamps



Nova Scotia Stamp Club Halifax, Nova Scotia, Canada

<http://www.nsstampclub.ca/>

Nova Scotia Stamp Club meets at 7:30 p.m. on every second Tuesday of the month (except July and August) at the Nova Scotia Museum, 1747 Summer Street, Halifax, N.S. The club publishes a monthly newsletter (except summer) which is released on the first week of the month.

Dues are C\$15 per person (US\$20 US, US\$25 International) or C\$22.50 per couple payable to:

Nova Scotia Stamp Club
102 Birch Bear Run
Lewis Lake, NS B3Z 4B8
webnews@nsstampclub.ca

Advertising rate for the newsletter or website is \$50 (CDN) per year.

with a common design: a tower made up of the six letters of the word "EUROPA" (Latin for Europe) and surrounded by construction scaffolding.

In 1960 the newly created European Conference of Postal and Telecommunications Administrations (CEPT) took over the administration of EUROPA stamps and the common design, shown right, is represented by the letter O in Europa as a Roman mail-coach wheel with 19 spokes, one for each member of . "CEPT" is also on each stamp.



The common design persisted from until 1973, when the designs began to reflect a common theme that each country could interpret.



Themes have included sculptures (1974), famous people (1980), European aerospace (1991), the Circus (2002). Only in 1983 (25th Anniversary of CEPT) and 2000 (Tower of six stars) were a Common Design again used. The themes were chosen such that all countries could represent their specific country in a European theme.

Many small countries or territories dependent of European countries (the Channel Islands for instance) began to join the issuing countries in the 1960-1970s. The success of Europa issues among collectors prompted many countries to participate and the number of countries involved rose to 35 in the 1980s. Turkey has participated continuously since 1960, and communist Yugoslavia from 1969. The collapse of the communist bloc brings new issuers as of 1990 to reach 57 countries in the late 1990s.



By 1993 CEPT decided to focus more on telecommunications and PostEurop took over the management of the Europa issues. The CEPT logo on stamps was replaced with a new EUROPA logo, shown right and left.



For the 50th anniversary year, 2006, PostEurop chose "Integration as seen by young people" instead of a theme related to the anniversary; however, several countries issued stamps or stamps on stamps showing the first common designs of the years 1950-1970. An anniversary logo (the number 50 in the middle of a star with 5 branches) is also featured on these stamps.

PostEurop created an annual competition of the "Best Europa stamp" in 2002 in order to promote Europa issues among philatelists. Until 2006, only representatives of the various postal administrations were entitled to elect the best Europa stamp during the Plenary Assembly of PostEurop.

Since 2007, the winner is elected through an open and public voting procedure on the PostEurop website.



Europa Stamps continued....

A new EUROPA logo, preceded by a symbolic reminder of the mailbox, was introduced in 2011.



From the PostEurop website: "EUROPA stamps underlines cooperation in the posts domain, taking into account promotion of philately. They also build awareness of the common roots, culture and history of Europe and its common goals.

As such, EUROPA stamp issues are among the most collected and most popular stamps in the world.

Since the first issue in 1956, EUROPA stamps have been a tangible symbol of Europe's desire for closer integration and cooperation."

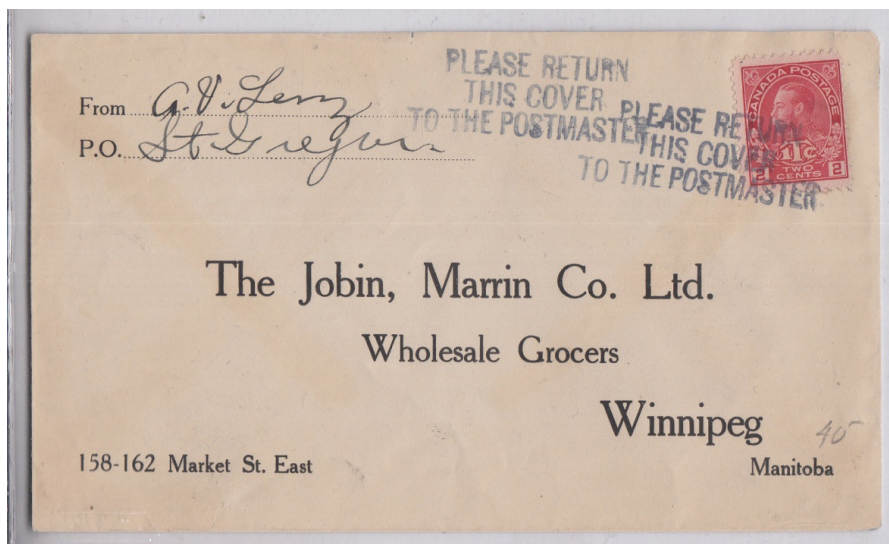
MYSTERIOUS HANDSTAMP

by John Hall

I came across this cover on E-Bay and was unable to determine the purpose of this hand stamp cancel:

PLEASE RETURN
THIS COVER
TO THE POSTMASTER

As it is a hand stamp, I must assume that it was used enough to justify making, but I don't know the reason for such a request. As the hand stamps appears to replace the normal cancels (no other marks on the front or back of the cover), I again must assume it was applied in St. Gregors from the return address supplied. An internet search revealed a similar hand stamp applied to cover in Sep 1909 at Jedway BC Mining Recorders Office to Victoria. No stamp was affixed and 2c due applied. Another FPO OHMS Active Service cancelled in 1915 had the handstamp applied 1c franked letter to Montreal. Robert K. Lane in his 'RPO Postmarks Used in Southern Manitoba' exhibit suggested that "it was available to mark inbound foreign mail with insufficient postage that ultimately had to be reported to the postmaster." Is there any information that can shed light on this mystery as to its purpose and rarity??

**NSSC Scavenger Hunt—June 10****Follow these simple rules:**

1. All stamps must be legally issued stamps from any country in the world.
2. All stamps must be displayed in some fashion other than loose in an envelope. Vario sheets might work the best but if you prefer to mount the stamps on a page that works too.
3. Each stamp must be identified as to which category it is filling.

The following categories are to be covered:

1. An unusual Nova Scotia Place
2. War of 1812
3. Board Game
4. Dragon Boat
5. Sport of Cricket
6. Hot Air Balloon
7. British Lord
8. Bi-Plane
9. Bird Flying over a Train
10. Shotgun/Rifle
11. Snail
12. Piano
13. Church
14. Goat
15. Sport Utility Vehicle
16. HMS Victory
17. An Elephant Carrying or Transporting Something
18. A Man's Tie
19. A Living American
20. A Painting by or of Salvatore Dali
21. Nuts
22. Jewellery
23. Microphone
24. New Year's Celebration

Complete details can be found in the April edition of the *Nova Scotia Post*.

Find all the items on the list and bring them to the **June 10th** meeting and Closing social.

Good hunting, HAVE FUN
and good luck with the bonus points.

Classifieds

Amanda Lewis. stamps and supplies - ARL1964@yahoo.ca.

STAMP SWAP: Available - Better worldwide and Canada for trade by want list:

penny.auction.stamps@gmail.com

Douglas J. Gray Supplies Sale

While supplies last! (tax included)

Vario Sheets: 4 packs for \$20.00

Hinges: 2 packs for 5.00

All mounts: 20% off cat.

Call me with your order at 461-0528 and I will bring them to the next meeting.

Framed Bluenose Keepsakes

consisting of the 1929 50c Bluenose stamp, a 1937 Dime and a piece of the new replica Bluenose II½, is available for \$50 each and can be purchased through Marcus Brauer (466-4339). Photos of the project development and available frames can be viewed at <http://tinyurl.com/c42o6te> and <http://tinyurl.com/c5hy7vz>. This endeavour is supporting local Scouting.

Membership

Jack Marshall (1064) has been excepted to the club.

A new membership has been received from John Beaton, of Hammonds Plains. John collects Canada—all types but specifically mentions covers back of book and booklets; United States—all singles and BOB; and, Worldwide. He is a past member of the Canadian Forces Stamp Club.



The Royal is Almost Here

The Royal 2014 Royale Convention Committee is pleased to announce the official visitor registration form is now online under the "Registration" menu. As in previous conventions, the visitor registration is used to sign up for any of the events, which include a President's Reception, Awards Banquet, Halifax Harbour Hopper Tour, and finally an Annapolis Valley Wine Tour.

The official forms and prospectus for exhibitors are now online under the "Forms & Documentation" menu. As in

previous conventions, the prospectus defines the rules and regulations for an exhibit, and contains all the official numbers and addresses to contact Gary Steele if any issues or questions are raised.

In addition, the registration form is used to register your exhibit with the committee, in preparation for placement and display on the convention floor.

Please note that all forms must be submitted before May 10th, 2014.

For more information please see: <http://www.royal2014royale.com/>

Tentative Schedule

Setup Starts at 9 am on Thursday—Can you help?

Registration starts at 10 am on Thursday.

Official Opening 9:30 to 10 am on Friday.—Georgian Room

Show Hours Friday May 30 and Saturday May 31 from 10 am to 5 pm. Sunday June 1, 10 am to 3 pm.

Take Down starts at 3pm on Sunday—Can you help?

There will a Hospitality room on site in the Victoria Suite—open during show hours.

Meetings and Seminars

Joy of Exhibiting—Peter Butler, May 30 3pm

RPSC Annual Meeting May 31, 10 am

BNAPS Atlantic Regional Meeting May 31, 11 am—1pm

Court of Honour—Pence/Cents Seminar (English) - Charles Verge, May 31, 12 pm

AAPE Meeting May 31, 1 pm

Court of Honour—Pence/Cents Seminar (French) - Charles Verge, June 1, 10 am

How to write for philatelic publication—Bret Evans, June 1, 10 am

Judging Critique 12 pm to 2 pm

Hope to see you there...