



# The Nova Scotia Post

The Newsletter of the Nova Scotia Stamp Club

January 2014  
Volume 43, Issue 436

## UP and COMING

### January 14

Club Meeting; Auction;  
Bruce Robertson—What I Collect!

**January 16** Friends of Philately  
NS Museum Boardroom, Halifax

**February 1** Moncton Stamp Fair  
RC Legion, 100 War Veterans Ave

**February 11** Club Meeting  
Auction; Program TBA

**February 20** Friends of Philately

**March 1** Moncton Stamp Fair

**March 11** Club Meeting  
Auction; Program TBA

**March 20** Friends of Philately

**April 5** Moncton Stamp Fair

**April 8** Club Meeting  
Auction; Program TBA

**April 17** Friends of Philately

**May 3** Moncton Stamp Fair

**May 13** Club Meeting  
Auction; Program TBA

**May 15** Friends of Philately

**May 3 - 4 2014**

**Orapex**

RA Stamp Club  
RA Centre, Ottawa, ON

[www.orapex.ca](http://www.orapex.ca)

**May 30 - June 1 2014**

**Royal 2014 Royale, Halifax**

Lord Nelson Hotel

[www.royal2014royale.com](http://www.royal2014royale.com)

**Travelling?** Check out time and  
place of other shows at

[www.rpsc.org/shows.html](http://www.rpsc.org/shows.html) or

[www.csdaonline.com/shows](http://www.csdaonline.com/shows)

## George Eastman and Photography

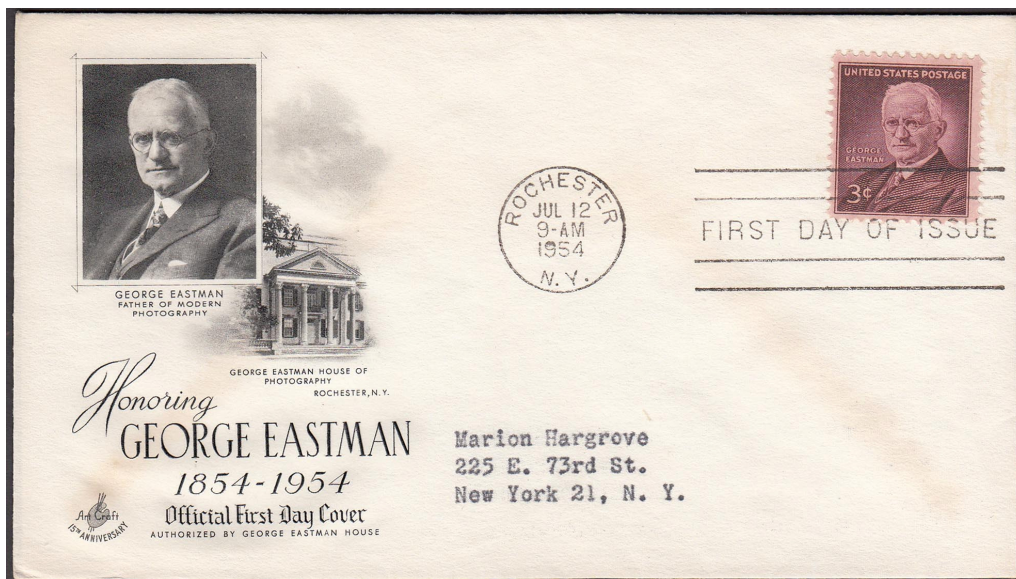
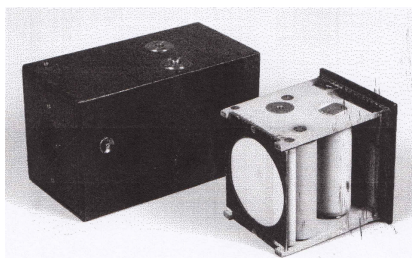
by Michael Peach

No account of the history of photography would be complete without George Eastman. George effectively revolutionised photography making it available to the average person without any technical knowledge. He introduced the photographic roll film and used this film in his other major invention the Kodak (Box Brownie) camera. Only relatively recently has digital photography replaced film photography as the norm.



George Eastman was born in 1854, the youngest child of George and Maria Eastman at the family 10 acre farm. His father's health deteriorated and in 1860 the family moved to Rochester. George senior died in 1862. George left school at age 14 and became a messenger boy for an insurance company. In the evenings he studied accountancy, and in 1874 he was hired at the Rochester Savings Bank and he was able to save a little money.

When he was 24, he became interested in photography and purchased a wet plate camera. The wet plate process was cumbersome and the plates needed developing immediately after use. He started to develop a dry process, initially with glass plates, and in 1880 he began making dry plates on a commercial basis. The plates had a photosensitive emulsion. George experimented with a layer of light sensitive gelatin on a more flexible base than a glass plate. He eventually came up with the roll film that he patented in 1884. Plate cameras were modified to take the roll film. Why not design a camera suitable for roll film that was easy for anyone to use? In March 1888 he filed a patent for his box camera. The camera was the first commercial roll film camera, see diagram, and also the first



Continued Page 2



[illegible]



## Do I have a Woodman Cache (Part 3 of a Series)

Harold "Woody" Woodman's cachet covers whether First Day Covers or event covers span some 33 years, a number gained from the covers I have or have seen. What I believe to be his last event or First Day Cover cancelled at Kentville Feb. 23, 1980 marking Rotary International's 75<sup>th</sup> Anniversary. Note - it is cancelled to the day of 75 years of the founding of the Rotary.

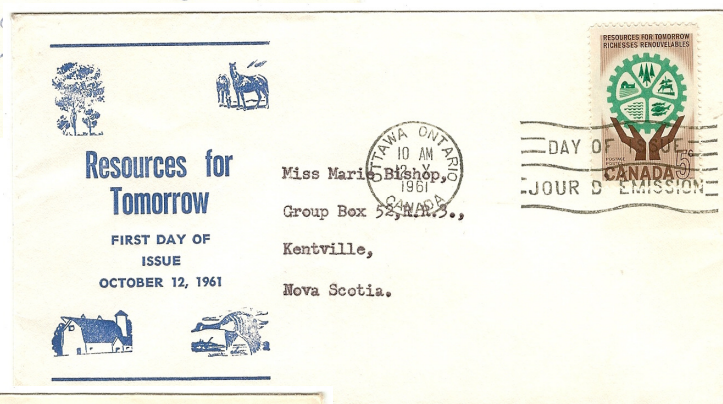
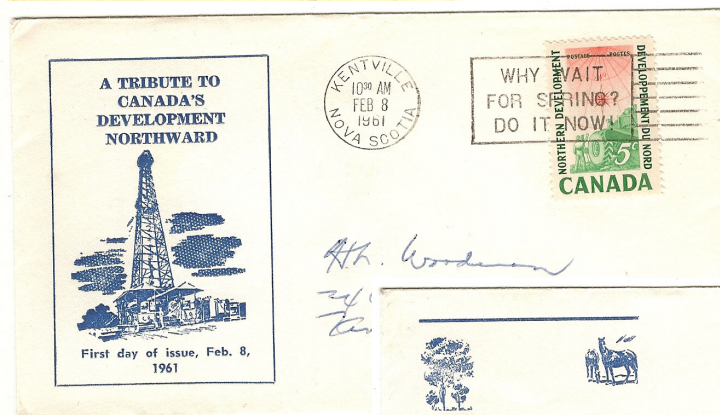
The earliest cachet cover of his that I have or have seen is the covers for the Alexander Graham Bell stamp of Mar. 3, 1947 which was dealt with earlier. It does not mean there are no other covers earlier than 1947 or later covers than 1980, only that I have not seen them.

In the early years it is clear that his cachet covers were drawn by hand in black lines. I am sure his background in cartooning was very helpful. It is not clear when he began to have cachet designs that were easy to duplicate. It seems to be around the middle 50's. For this, I would suspect he was in the right place to have this done. As Editor for the *Advertiser* he would have had the expertise and craftsmen able to help. As you see from the accompanying pictures they did vary in color but overall lots of blue cachets. All that I have seen are of one color per cachet and no identifying name or mark.

Some clues as to whether it is a Woodman cover or not would be a combination of several things. Many of the covers will be cancelled Kentville and especially if sent to himself or to his daughter Janet Woodman. She told me that her father always sent her a First Day Cover, so one can always be sure that it is a Woodman if you can find an FDC addressed to her. Both covers shown addressed to them, are done in Harold's handwriting which helps in identifying covers as Woodman's. Finding covers consistently ad-

By Brainard Fitzgerald

ressed to several other people on a regular basis can also help identify the Woodman cover. Find a few that match with those sent to Janet Woodman and it can almost assuredly be a Woodman cover. Those covers addressed to Miss Marie Bishop, cancelled in Ottawa as a First Day Cover, are Woodman's and are useful in identifying Woodman covers even though they were not cancelled in Kentville. A few Woodman covers were cancelled in Port Williams as the Christmas 71 indicates. Ann-Marie Belliveau for the most part had her First



Day Covers of Woodman cancelled at the Kentville Sanatorium when that Post Office was still open. (To be continued)

[Final instalment will be published in the February 2014 newsletter -ed.]





## Classifieds

**Amanda Lewis.** stamps and supplies - [ARL1964@yahoo.ca](mailto:ARL1964@yahoo.ca).

**STAMP SWAP:** Available - Better worldwide and Canada for trade by want list:

[penny.auction.stamps@gmail.com](mailto:penny.auction.stamps@gmail.com)

**Douglas J. Gray Supplies Sale**

While supplies last! (tax included)

Vario Sheets: 4 packs for \$20.00

Hinges: 2 packs for 5.00

All mounts: 20% off cat.

Call me with your order at 461-0528 and I will bring them to the next meeting.

**Framed Bluenose Keepsakes**

consisting of the 1929 50c Bluenose stamp, a 1937 Dime and a piece of the new replica Bluenose II½, is available for \$50 each and can be purchased through Marcus Brauer (466-4339). Photos of the project development and available frames can be viewed at <http://tinyurl.com/c42o6te> and <http://tinyurl.com/c5hy7vz>. This endeavour is supporting local Scouting.

**New Member and Dues**

At the December Club Meeting, new Member Daniel Finch applied for membership and was accepted on the spot by a vote of those present. Daniel, a Halifax resident collects nautical - sailing ship related material.

Thanks to those you paid there dues before the deadline. We are down to a handful of unpaid members who we will diligently nudge a little harder. Member cards have been enclosed with the mail out of the January issue or distributed at the meeting. For those who receive the news electronically and don't attend meetings please let me know if you want your card mailed or sent as a pdf.

**PHILATELIC WORD SEARCH**

P E X S L E C N A C E R P C B  
W H Q A I M S E L V E D G E G  
I C O G T C B W N T T X B C T  
L E Y T H R X P G T T W E Y G  
D B E E O R A N R E E N T R Y  
I E J N G G D W P K N R H Q M  
N T N I R P R E V O G Z E D Y  
G E V L A C L A S S I C M D W  
E T V A P K K B V U V W A H B  
J T E N H R Y T M U N E T S B  
B E R A Y E E A M O R U I I P  
W L O F F I C I A L R E C K K  
O U J L F H M C U B F J X Y E  
K O E A I N E M I C E P S Y T  
O R T N I R P M I X M T A M V

ANALINE  
CENTERED  
CLASSIC  
IMPRINT  
LITHOGRAPHY  
MACHIN  
MULREADY  
OFFICIAL  
OVERPRINT  
PHOTOGRAVURE  
PRECANCEL  
RE-ENTRY  
ROULETTE  
SELVEDGE  
SPECIMEN  
TETE-BECHE  
THEMATIC  
UNUSED  
VIGNETTE  
WAR TAX  
WILDING

Submit your own theme based word list. [NSSC ed.]

**Member Awards—Thailand 2013**

For those of us you are RPSC members you will have noted the article "Thailand 2013" Sam Chiu, FRPSC, Canadian Commissioner, gave a report of the Canadian success at the International Show in August 2013. Of the three Canadian exhibitors, NSSC member Jean-Jacques Tillard had two exhibits that received Gold and Large Gold. Mr Chiu writes, "To put the results in perspective, there were only 24 Large Gold Medals awarded in the exhibition. Jean-Jacques Tillard's second exhibit, which received a Gold Medal, is also quite an achievement for a five-frame exhibit at an international show."

Former NSSC member Fred Fawn received 92 points for his single frame entry. No medals were given for single frames. Hew received the second highest score in the single frame entries.

Congratulations to these members for their great showings.

**Vertical Misperf? - Michael Peach**

It has been suggested that the misperf shown in my cover story in the November Post may have originated from a stamp vending or dispensing machine. The perforation on the stamp is 14¼ and on the misperf is 10¼. An enlargement of the stamps shows that in a given unit there are 4 perfs and 3 misperfs. So it is improbable that this misperforation originated in a misaligned dispensing machine. Interestingly, however, the distance between the misperfs is about the same as the two regular perforated stamps. This may be clearer on the image of the two stamps.

