

# Cancellations of the Canadian province of Nova Scotia on Saint-Pierre and Miquelon stamps

## A study of cancellations in transit or on arrival in Nova Scotia.

Mails posted in “mobile” mailboxes were either cancelled aboard vessels or in Canada, at their arrival. Such Canadian postal cancellations and other markings on Saint-Pierre and Miquelon stamps and such mail only exists in very small numbers.

**All of these postal marks are extremely important for the postal history of St. Pierre and Miquelon, but also for Canada, and only hand carved "corks" were used to cancel these letters in transit.**

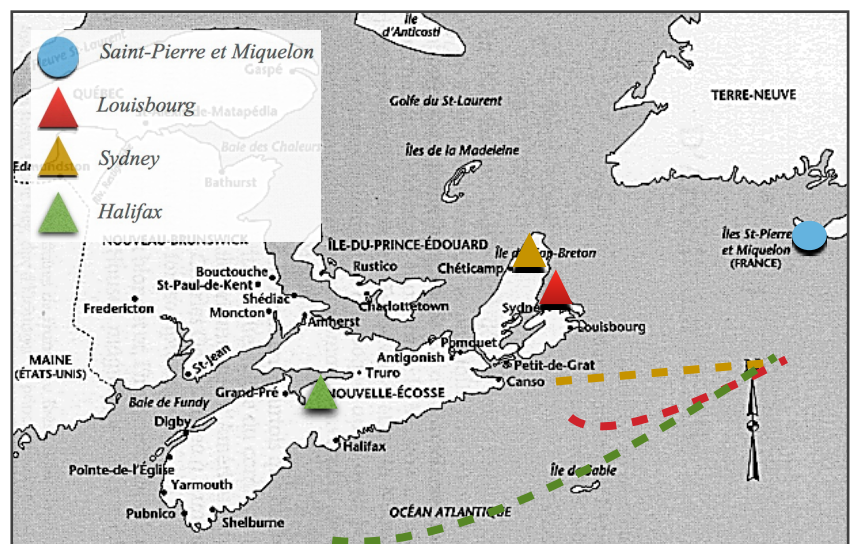
The cancellation by a foreign postal administration of mails posted in the French archipelago, are of particular interest for the postal history of this small but significant French colony located off the coast of Canada, the oldest and original French territory in all of the Americas. The scope of the exhibit is the study of all of the known Canadian cancellations on single stamps and mails, either addressed to, or transiting via Nova Scotia.

Since 1845, private agreements and other contracts established a maritime line for the transportation of sealed postal bags between Saint-Pierre and Miquelon and Nova Scotia. Though vessels were scheduled to depart every other week from the city of Saint-Pierre, severe winter weather conditions were often causing significant delays, thus causing vessels to depart on Saturdays or Sundays, when the Saint-Pierre post-office was closed. **In 1883, the Governor of the French colony authorized the installation of mobile mailboxes aboard these vessels, mostly to overcome the closing of the Saint-Pierre and Miquelon post office on week-ends, and for posting last minute mails.**

The main two maritime lines were:

- Sydney/North Sydney line (usually from May 1<sup>st</sup> to December 31<sup>st</sup>), 175 nautical miles from Saint-Pierre and often ice-covered in the winter. 70.3% of postal mail was transported through that line.
- Halifax line (usually from January 1<sup>st</sup> to April 30<sup>th</sup>), about 345 nautical miles from Saint-Pierre and usually accessible by sea in the winter. 29% of postal mail was transported through that line.

Due to exceptional bad weather conditions, or for other technical reasons, vessels were sometimes derouted to **Louisbourg p. 40, 80, 81** or **Baddeck p. 41**. These destinations are very rare



### INTRODUCTION

A - CACHET SHIP LETTER P 2  
B - CACHET SHIP LETTER AVEC DATE P 3

### MUTE CANCELS

C - LES BOUCHONS P 4 À 19  
D - LES GRILLES P 20 À 40  
E - LES CIBLES P 41 À 42

### CANCELLATIONS WITH TEXT UNDATED

F - CACHET COLIS P 43  
G - LES GRIFFES PAQUEBOT P 44 À 52  
H - LES GRIFFES PAQUEBOT ET BOUCHON P 53 À 61  
I - LES GRIFFES PAQUEBOT ET GRILLE P 62 À 65  
J - LES ROULEAUX P 66 À 69

### CANCELLATIONS WITH DATE

K - CACHETS CIRCULAIRES P 70 À 81  
L - CACHET ELLIPTIQUE P 82  
M CACHET RECTANGULAIRE P 83  
N - CACHETS PAQUEBOT P 84 À 105  
O - CACHETS DUPLEX P 106 À 109  
P - CACHETS DUPLEX ET PAQUEBOT P 110 À 112  
Q - CACHETS FLAMME PAQUEBOT P 113 À 124

EXCEPTION LA VOIE DU COMMERCE P 125 À 126  
EPILOGUE LA VOIE AÉRIENNE P 127 À 128

2 à 10 pièces connues

Pièce unique à ce jour

### BIBLIOGRAPHIE

- «The french colonial allegorical Group Type as used in St-Pierre et Miquelon»  
by G. STONE and J.J. GRABOWSKI  
«Les feuilles marcophiles» de Joseph BERGIER  
«Paquebot cancellations of the world» by Roger HOSKINGS  
«Bulletins officiels administratifs» de St-Pierre et Miquelon  
Canadian duplex cancellations by Stéphane Cloutier

 *Saint-Pierre et Miquelon*

 *Louisbourg*

 *Sydney*

 *Halifax*