

EXHIBIT SUMMARY

CANADIAN DEAD LETTER OFFICE HANDSTAMPS

Significant items:


A large portion of new items of either major DLO significance or philatelic significance have been added or improved in this exhibit, with updated research throughout:

1868 Precursor OKC of DLO Return envelopes, pre-handstamp era – Frame 1 page 2
Earliest reported Shift marking – Frame 1 page 15
Earliest reported Superintendent's Office Oval handstamp – Frame 2 page 1
Earliest reported & latest reported Chief Superintendent Oval handstamp after decentralization, Frame 2 page 3 & 4
OKC Received Double Circle Ottawa handstamp – Frame 2 page 6
Ottawa Double oval OKC on 1920 Admiral cover to Gambia – Frame 2 page 11
Earliest reported use of any Toronto, Charlottetown, Hamilton, London, and St. John DLO h/s
Steel Circle handstamp on Edward parcel post Customs piece – Frame 4 page 8
OKC No. 12 double border DLO h/s on five country cover, with three countries postage due stamps tied – Frame 5 page 15
Rare Moose Jaw – Frame 9 page 1 and Sherbrooke (1 of 2 known) DLO handstamps - Frame 9 page 16
Largest assemblage of Dead Letter Office Wax Seals – Frame 10
Earliest reported DLO Wax Seal used after Decentralization period, **Wax Seals are handstamps** - Frame 10 page 9
1st printing of DLO return envelope after decentralization in Ottawa. - Frame 10 page 9

This Canadian Dead Letter Office postal history exhibit takes into consideration my initial BNAPS Study Group Dead Letter Office Newsletter approach to separate the various City types (major and sub-types) of Dead Letter Office (DLO) handstamps by size, lettering, characters and dates used.

Treatment

- **1872 onward of early Ottawa DLO handstamps to decentralization June 30, 1898**
- **July 1, 1898 Branch and Local offices until formation of the Undeliverable Mail Office in the early 1950's.**
- **Latest known use for the Canadian DLO handstamps is 1954 (other than the Montreal Registration anomaly during the Undeliverable Mail Office period (UMO)).**
- The words '**Dead Letter Office** and initials '**D.L.O.**' or **Bureau des Rebutis** appear in each handstamp.
- Canadian DLO handstamps includes a variety of postal matter both domestic and foreign, printed matter, first class, registered, insufficient postage, unpaid, fraudulently used postage stamps on cover, unclaimed, mail service suspended, unknown and Returned Dead Letter envelopes etc. Each cover tells a lengthy story (5 to 10 handstamps or more) sometimes being held for a period of over several months or years as per regulations of the Post Office and Dead Letter Office. With regards to condition please note that these items are handled many times by people in different departments and countries. They sometimes travel 2 to 5 times the distance of a regular letter to get to a final destination.
- Most items include the reason for non-delivery (Gateway Marking) including a date stamp of the office making the return and to be examined upon receipt by the DLO to make sure it has not been held beyond the period specified. The regulations were not followed all the time.
- The function of the DLO is to receive these letters (pre 1898: shift marking or date stamp applied, Post 1898: receiving handstamp) owing to failure of delivery, for any reason, under regulations that cannot be forwarded to the final destination.
- April each year items are to be serially numbered (file#) starting at #1. No specific date rule started. Not all offices followed this procedure.
- Items are then examined and opened to try to find the sender's name and address, or to receive and affix proper postage, forward to addressee's proper address and/or return said items in a Returned Dead Letter Envelope date stamping each item.

- Dead Letter Mail consists mainly of covers with markings of:
 - 1: Previously Used Stamps
 - 2: Not Called For
 - 3: Unknown
 - 4: Addressee Deceased
 - 5: Addressee Removed (House Torn Down) and other reasons stated.
 - 6: Unclaimed
 - 7: Wholly unpaid or Insufficiently Paid, Forcibly Removed Stamped Matter or prohibited addresses.
 - 8: Insufficiently Addressed or failing of delivery items such as Mail Service Suspended.
 - 9: Returned Dead Letter Envelopes and internal mail.
- Without the Dead Letter Office, the postal system would slow to a crawl. The postal system is designed to work smoothly. However, it is the small percentage of material that fails delivery, and requires the expertise of the DLO to allow the rest of the postal system to function.
- If a Strike Proof exists the date will be indicated
- ERD and LRD, OKC are indicated where space allows
- **Items of special interest are bordered in red.** 

General DLO Study and Research

- 30+ years of collecting Dead Letter Office handstamps, original research, discovery of new handstamps and detailed examination has un-earthed many new items OKC (only known copy or only known reported copy) Earliest and Latest Reported Dates.
- Editor of the DLO Newsletter for the BNAPS Study group, Recognized authority for adding new finds and critique to the catalogue listings.
- Only Known Copies (OKC) are assumed based on reports made, subject to change.
- Characteristics surface from a variety of shapes and sizes of handstamps.
- Many items are poorly handstamped having been handled many times or may have been "damaged in the mails". This may also be a result of many handstamps on one item making interpretations difficult. Magnification of handstamp measurements were used many times to confirm dimensions.
- Dimensions of steel handstamps from 1898 down can be different to due wear and strike. These early hammers were sometimes used over a 20 year period causing wear of minor parts such as an "X" turning into a dot.
- No records exist for all DLO proofs with dates, thus it is impossible to know which handstamps appeared before others. Only way to compare handstamps is to view similar items together. It is assumed that proofs existed before the use of any hammers.
- Early DLO handstamps will be separated by type, size, lettering with and without dots, size of arcs split and unsplit etc. Variations may occur with mention of certain handstamps on other pages of covers with multiple handstamps. Later items have more variety in shape, dimensions and lettering. **Not all items are in chronological order as they are organized by type and size as best possible depending upon when the DLO offices opened.**
- Total numbers of all DLO covers from **1898 down** are unknown, however best estimates of 400 to 600 exist with fewer than these numbers in good quality condition as to clarity of strike. This does not include the early DLO Return Envelopes, as they do not normally have DLO handstamps placed on them.
- There are more types and listings of Items from 1898 up due to the increased Branch Offices, and higher populations resulting in more mail having been produced. However, although the number of offices and types of handstamps increased, a substantial portion of known handstamps is fewer than five known/reported. Many have never been found other than proofs made for the CPO Proof books.

Changes

- Totally renovated from ten years ago, with more research, new additional items in both type and rarity encompassing all 18 Dead Letter Offices. Over 2000 changes made, major and minor.
- Many are very rare; in cases of more common handstamps, I have used covers with many elements to enhance the overall exhibit.

OKC, Previously Unknown (OKC), Earliest Reported Date, Latest Reported Date

60+ Only known copies

80 Earliest Reported Date

45 Latest Reported Date

Exhibit Plan - See title page.

Previous Awards:

10 frame Canadian Dead Letter exhibit 2017 ORAPEX National show – **Large Gold**, PHSC Best Postal History (BNA), APS Medal of Excellence (1900-40), BNAPS, Best BNA, BNAPS Best Researched, BNA, Auxillary Markings Society Award of Merit

10 frame Canadian Dead Letter exhibit 2016 NOVAPEX National show – **Gold - 96 points**, Reserve Grand, Best BNA Exhibit, Best BNA Research award, PHSC Best BNA Postal History Exhibit, APS 1900-1940 Medal of Excellence, Title Page Excellence Award

10 frame Canadian Dead Letter Office Handstamps, Filex 2015 National Level, Gold

10 frame 2014 ORAPEX National show – Gold 93 points, **Reserve Grand**, Auxillary Markings Soc. Award, BNAPS Best BNA Exhibit, BNAPS Best BNA Research Award,

10 frame 2014 Royal Halifax National show – Gold, PHSC Awards Best BNA Postal History Exhibit

5 frame Ottawa Dead Letter Office Handstamps 1874 – 1950, Gold, BNAPS Best Research Award

4 frame Ottawa Dead Letter Office Handstamps 1874 – 1950, Orapex 2009 Gold 90 points, Best 2-4 Exhibit, PSS award

Multi-frame Canada Dead Letter Office 1874 – 1954 BNAPEX 2008 Gold, **GRAND AWARD**, APS Research Award, Majority of Ottawa material is from this exhibit refined with new finds and research.

Single frame Royal/Royale Quebec 2008 Gold Best single frame exhibit, contains early pre 1898 Ottawa DLO material

Bibliography

The Dead Letter Office in Canada 1830 - 2002 July 2006 Brian C. Plain

The Dead Letter Office 1874 – 1954 BNAPS exhibit handbook Gary W. Steele

BNAPS Dead Letter Office Study Group Newsletter - **Editor of the newsletter**

<http://bnatopics.org/hhlibrary/newsletters/n-dlo.htm>

46 articles continuing series Nova Scotia Post and Mail newsletter, online www.nsstampclub.ca These are also being run in the Maple Leaves Journal of the Canadian Philatelic Society of Great Britain.

Proof strikes are from the Proof Strikes of Canada Volume XXIII by Robert A. Lee

P.O. Dead Letter Office Procedure Reports 1933, P.O. Postal Guides 1892, and P.O. Information Manuals

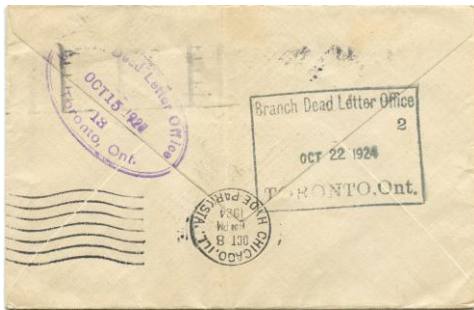
A few recent items added



Frame 2 page 8, Mail Service Suspended to South Africa
Earliest reported date of 25mm steel circle DLO h/s



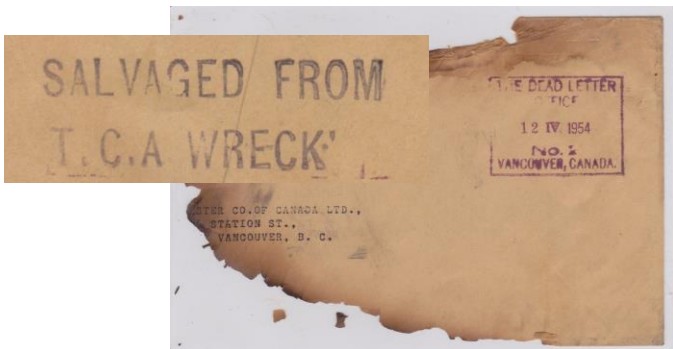
Frame 10 page 2. Received at Montreal
D. L. O. in damaged condition, Advice Marking



Frame 6 page 12, new find, OKC, unique style 2



Frame 7 page 6, SALVED FROM THE SEA



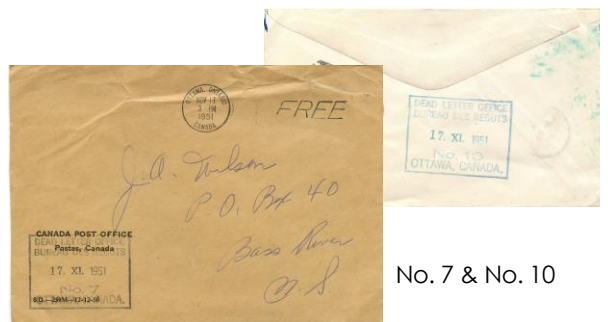
Frame 8 page 13, LRD, Plane crash cover



Frame 9 page 13, OKC, recent find



Frame 4 page 14, OKC, unique style double oval Montreal



Frame 3 page 6, Return envelope & enclosure, OKC's

No. 7 & No. 10